



Get in control of your graphical output

Spend your time on your primary tasks, and get your files, logs and montages printed correctly. With all the applications you use, special formats like CGM+ and CGM*PIP, combined with the number of printers and plotters available, EasyPlot provides the perfect output in a timely manner.



Fast, flexible and scalable

EasyPlot is the flexible and scalable plot solution you need. It provides Geo Work Groups with a production oriented printing solution - fast and reliable and integrated with your Windows and UNIX applications.

- View and plot files: CGM+, CGM PIP, EMF, PDF, and SVG, as well as common desktop raster formats like JPEG, GIF and TIFF
- Print or plot directly from your application

High Performance Drivers

The EasyCopy Company has worked with printer/plotter drivers on UNIX since 1989. These high performance drivers are now also available for Windows users (including 64 bit XP, Vista and Windows 7) in addition to traditional Windows drivers.

New printers and plotters are being added on a regular basis and the plot speed and quality are the factors that differentiate the EasyPlot drivers from most other drivers.

EasyPlot Features

Comprehensive support for log printing:

- Keep 1:1 for the length and shrink width to match actual paper width in the printer/plotter
- Stitch/merge multi-page PDF Files.
- Remove white space between pages (equally sized)
- Support for special log plotters

Easy and reliable 1:1 plotting:

- Foolproof plotting automatically calculates the correct page size (Adapted Page Size)
- Recognizable thumbnail previews
- Total control of position and relative size
- Top offset to ensure that plots on fanfold paper start at the top of a new page
- Paneling when 1:1 plot is too large for the paper size
- Set required Y and X overlap
- Adjust plotter accuracy up to 5 digits

Print and plot from Windows, UNIX or Linux

Your printing needs are special. EasyCopy intelligently handles your industry specific needs with high quality CGM plotting, adapted page size, paneling and intelligent log plotting.

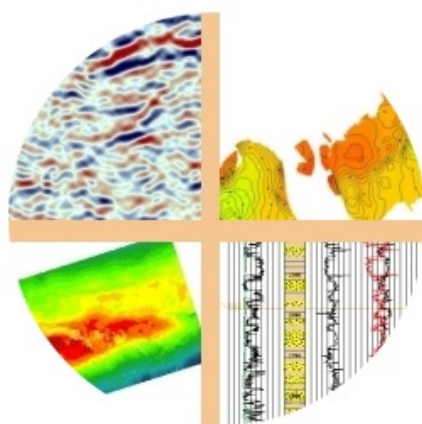
It is also good for your bottom line!

EasyPlot is the plotting back-end for GEO and CAD applications. It is derived from EasyCopy to meet the need for a cost effective, good and flexible cross-platform technical output solution to handle processing and printing from other applications.

EasyPlot is perfectly suited for product developers as a cost efficient integrated plotting solution.

EasyPlot can also be used as a stand-alone File Print/Plot application. It improves your workflow to make you more productive. And, it optimizes your graphics investment with *one* easy cross-platform solution that plots both bitmap and vector formats. Your team has access across the entire network and can output on all available printing resources.

We're passionate about plotting. Call us today for a free product demo.



Output Management:

- Print layout tools
- Adjust colors, change brightness, contrast, saturation and gamma
- Set output mode (gray, color, B/W..) or reversal mode
- Remove 1 or more backgrounds to save ink/toner and get a clearer output as a bonus
- Add stamp or label by typing a text string or from environment variables or UNIX standard commands

General:

- High productivity through command line interface
- Plot directly from your UNIX or Windows desktop
- Accurate print preview
- Easy integration with your applications
- Workflow management via CUPS integration
- Easy to install and administer
- Available in English, German and Chinese (Other languages per request)

Technical Data

EasyPlot has High Performance Drivers for:

- Canon (Garo, RTL)
- Epson
- Hewlett-Packard (PCL, PCL3GUI, RTL)
- iSys
- Lexmark
- Océ
- OYO
- Neuralog
- Printrex
- Ricoh
- Xerox
- All PostScript printers and plotters
- Generic PCL
- Generic RTL
- Print to File

EasyPlot has support for:

- All Windows Drivers

EasyPlot has support for vector and raster files:

- CGM, CGM+, Seismic extensions, CGM PIP, CGM ATA, CGM CALS
- EMF, SVG, .edit, .CPM
- PDF
- GIF
- JPEG incl. JPEG 2000
- PNG
- PBM
- TIFF and more

EasyPlot supports all major platforms:

- AIX 5.3+
- HP-UX11+
- Linux (Intel or AMD x86 and x86-64)
- Sun Solaris 8+(SPARC)
- Sun Solaris 10+ (PC 64 bit)
- Windows XP, Vista and 7 (32 and 64 bit)

Valid from July 2011 – Subject to change without notice

For more information please contact GEO Designs Ltd at info@gdesigns.co.uk +44 2392 466750 www.gdesigns.co.uk